

## CONNECTION ECR TO PC (DEMOVB - ECR SETUP)

[CONNECTION TO SERIAL ECR OR USB ECR](#)  
[CONNECTION TO ETHERNET ECR](#)  
[INPUT FILE](#)

Document	Rev. N.	Date	Reason of review
YP_Connection_Ecr_to_PC(DemoVb-EcrSetup)	0	11-04-14	
Released from:: Necco Dario	Approved from:		

## CONNECTION TO SERIAL ECR OR USB ECR

### MATERIAL REQUIRED:

- SetupWinECRCom1.9.12FirmwareA\_EN (1.9.12 is the last version on 11/04/14)
- ECR Setup 2.0.6 ITA

### PREPARATION ECR:

- Set the host port communication:
  - 4 → [KEY]
  - 9 → [CHOOSE] (SET PORT 1)
  - [CONFIRM]
  - To the item **TYPE**, by key [CHOOSE], set: TYPE=HOST PC → [CONFIRM]
  - To the item **PROTOCOL**, set parameters like in the below scheme → [CONFIRM]

#### PROTOCOL

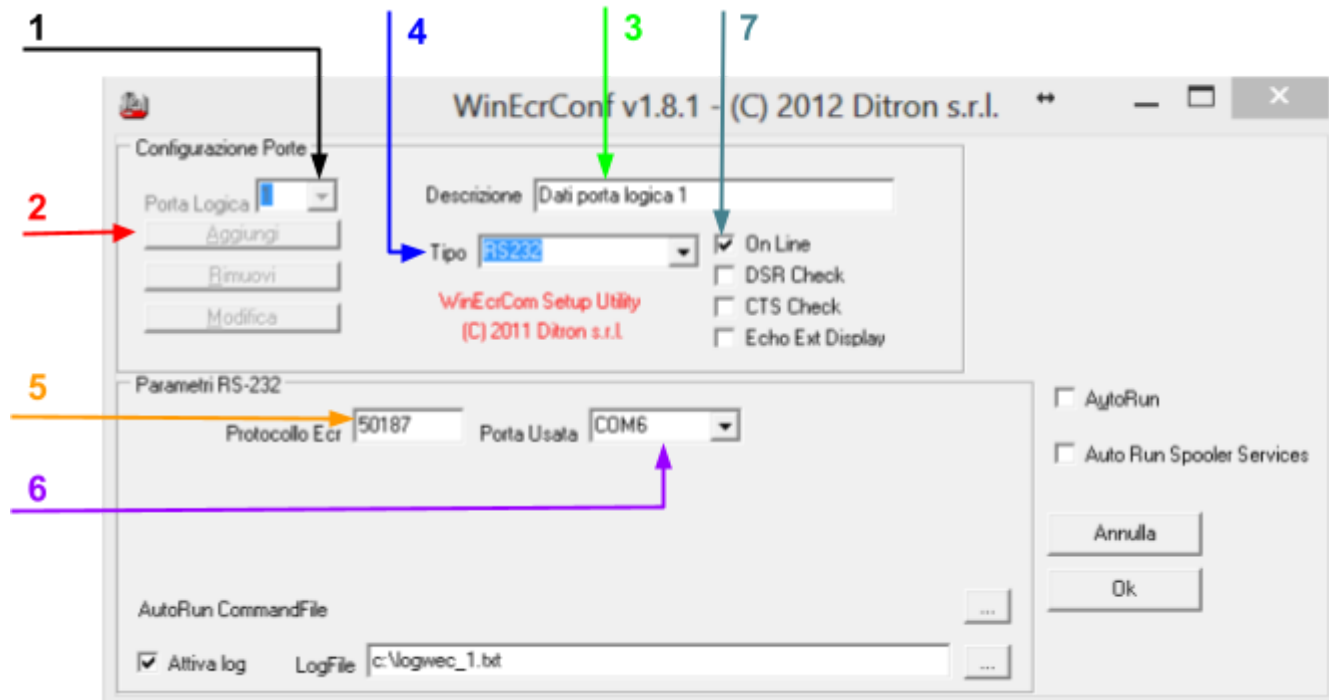
5	0	1	8	7
<b>SPEED':</b> 1. 1200 bit/sec 2. 2400 bit/sec 3. 4800 bit/sec 4. 9600 bit/sec 5. 38400 bit/sec 6. 57600 bit/sec 7. 115200 bit/sec	<b>PARITY:</b> 0. NO 1. EVEN 2. ODD	<b>STOP BIT:</b> 1 o 2	<b>FIX NUMBER</b>	<b>OPTIONS:</b> 1. if active, indicates that the control check-sum will be transmitted and awaited in reception 2. if activated, indicates long time-outs, while if deactivated indicates short time-outs. 4. if activated, it indicates that the connection phase is not required; if deactivated, it indicates that the connection phase is required  It's possible use options together, by summing the values:  Example: 1+2+4 = 7

- Press [END] 2 times
- Type 101 → [CONFIRM] (enables connection settings applying the above settings)

### PROCEDURE:

1. From the setup package run **SetupWinECRCom1.9.12FirmwareA\_EN.exe** and follow the wizard
2. At the end, copy on the desktop the folder [WinEcrCom 1.9](#), from the menù "All programs" of start menu, which contains all shortcut of program.

3. Run **WinECRConf** in the folder **WinEcrCom 1.9**



1. Type the logic port number (it's a arbitrary number which identify the Ecr)

2. Click **Add**

3. Set a description (for recognize the setting. Ex: Quadra)


4. Set Communication Type Protocol (**RS232**)

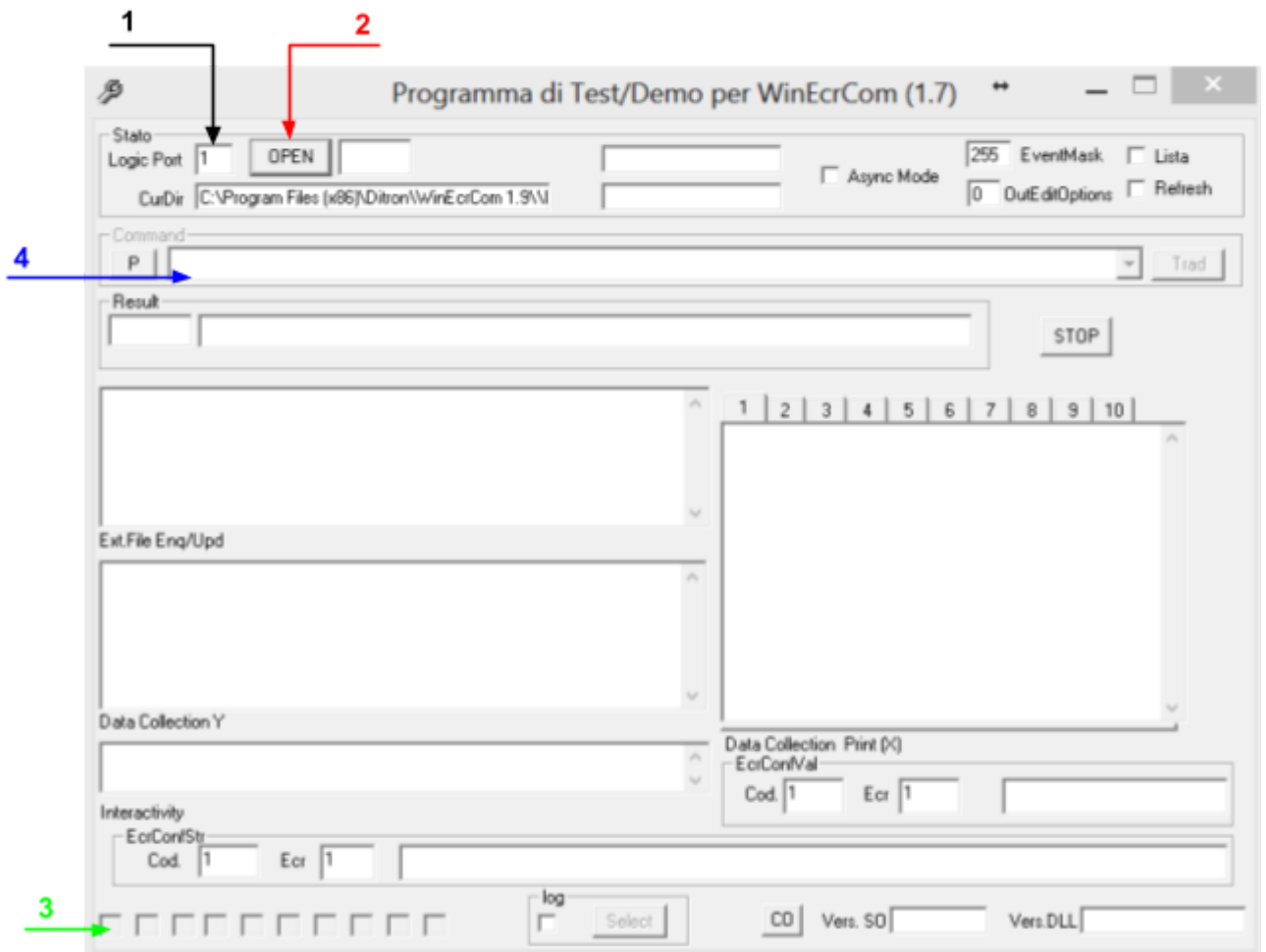
5. Set speed protocol (it's the same that you set before in the Ecr)

6. Set the COM used (you can know the number port in menù DEVMGMT.MSC)

7. Check "on line"

8. Click **OK** to save, and close the window

4. Check the connection, so click on icon  DemoVB



1. Type the logic port number of Ecr (the number was been set in the point 3)
2. Click on **Open** (the button label will change in CLOSE)
3. If the connection will be OK, the square indicated from green arrow (3), will change in green
4. To check a print, type in the box indicated from blue arrow (4):

**CLEAR** → ENTER

**KEY REG** → ENTER

**SALE DPT=1,PRICE=0.20** → ENTER

**CLOSE T=1** → ENTER

The printer will print a sale

5. Click on **Close** for closing connection with ECR, and close the DemoVB window.

## CONNECTION TO ETHERNET ECR

### MATERIAL REQUIRED:

- **SetupWinECRCom1.9.12FirmwareA\_EN** (1.9.12 is the last version on 11/04/14)
- **ECR Setup 2.0.6 ITA**

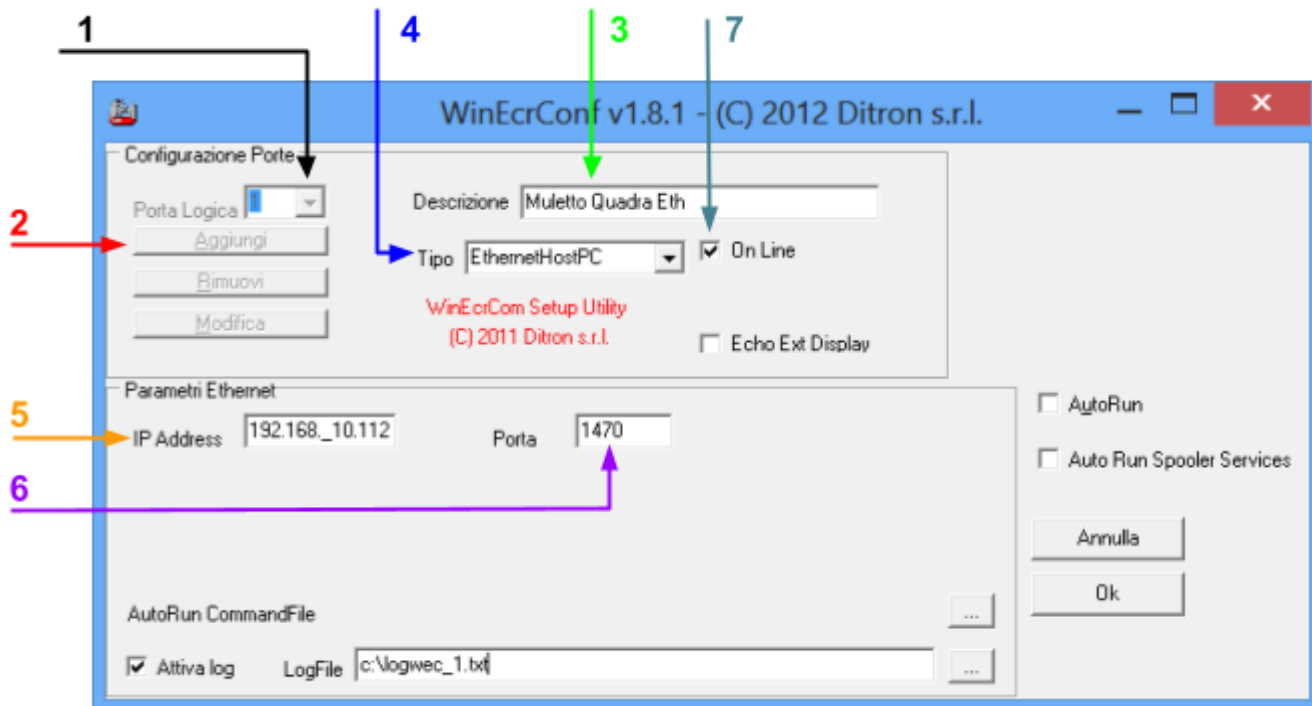
### PREPARATION ECR:

- Set the host port communication:
  - **4** → **[KEY]**
  - **9** → **[CHOOSE] (SET PORT 1)**
  - To the item **TYPE**, set **HOSTPC** by **[CHOOSE]** key → **[CONFIRM]**
  - To the item **PROTOCOL** type **70185** → **[CONFIRM]**
  - Press **[CONFIRM]** as long as you see the item **DHCP** and set **NO** by **[CHOOSE]** → **[CONFIRM]**
  - To the item **ADDRESS IP** type Address IP to set to Ecr → **[CONFIRM]**
  - To the item **SUBNET MASK** type subnet mask → **[CONFIRM]**
  - To the item **GATEWAY** type gateway → **[CONFIRM]**
  - To the item **DNS1** type dns1 → **[CONFIRM]**
  - To the item **DNS2** type dns2 → **[CONFIRM]**
  - Keep defaults for the other parameters, so press **[END]** 2 times
  - Type **101** → **[CONFIRM]** (enables connection settings applying the above settings)

### PROCEDURE:

1. From the setup package run **SetupWinECRCom1.9.12FirmwareA\_EN.exe** and follow the wizard
2. At the end, copy on the desktop the folder [WinEcrCom 1.9](#), from the menù “All programs” of start menu, which contains all shortcut of program.

3. Run **WinEcrConf** in the folder **WinEcrCom 1.9**



1. Type the logic port number (it's a arbitrary number which identify the Ecr)

2. Click **Add**

3. Set a description (to recognize the setting. Ex: Quadra)


4. Set Communication Type Protocol (**EthernetHostPC**)

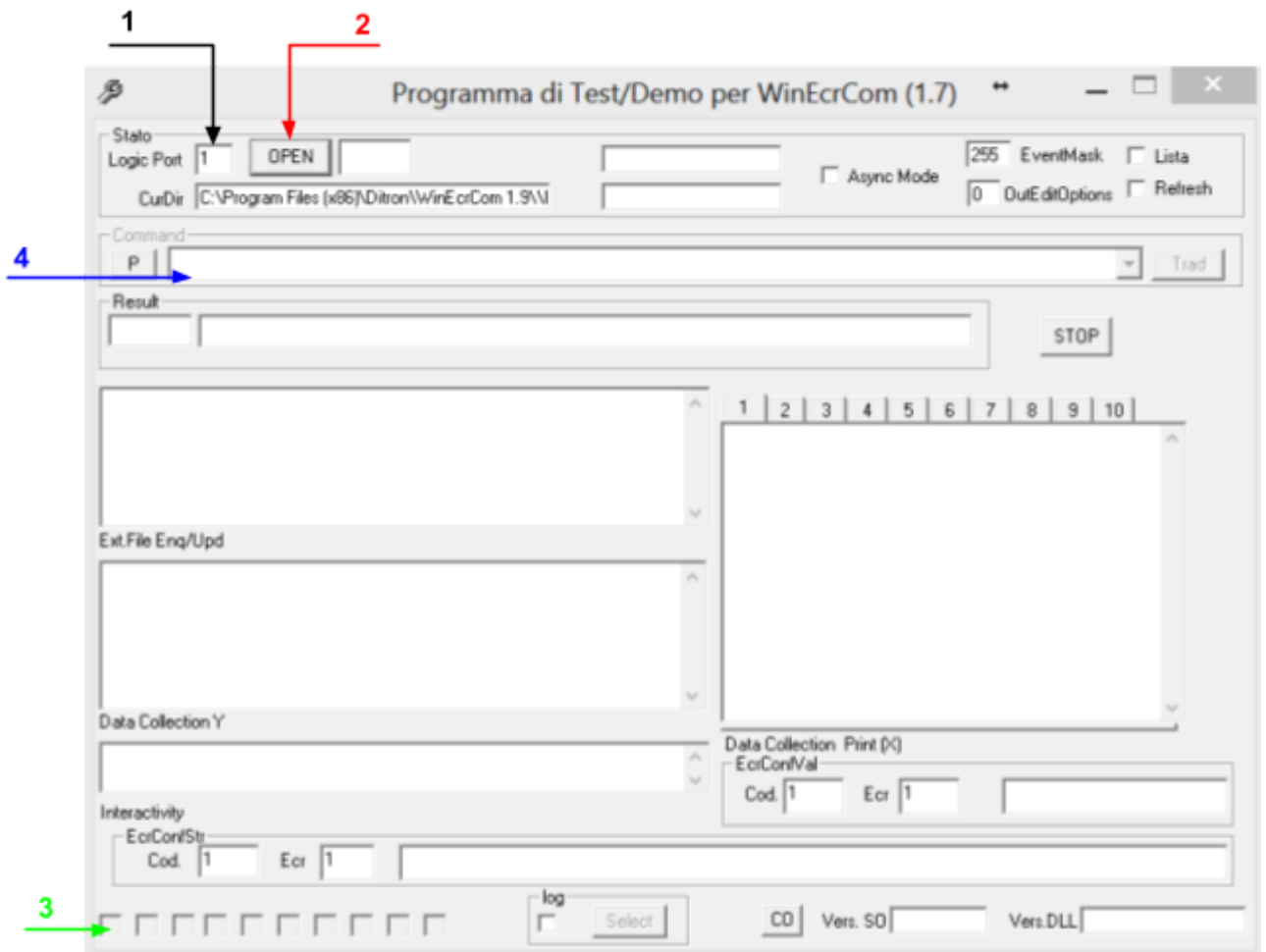
5. Type IP Address's Ecr (Zero not significant mustn't be written: type *space*)

6. Type the PORT1 value set in Ecr (default 1470)

7. Check "on line"

8. Click **OK** to save, and close the window

4. Check the connection, so click on icon  **DemoVB**



1. Type the logic port number of Ecr (the number was been set in the point 3)
2. Click on **Open** (the button label will change in CLOSE)
3. If the connection will be OK, the square indicated from green arrow (3), will change in green
4. To check a print, type in the box indicated from blue arrow (4):

**CLEAR** → ENTER

**KEY REG** → ENTER

**SALE DPT=1,PRICE=0.20** → ENTER

**CLOSE T=1** → ENTER

The printer will print a sale

5. Click on **Close** for closing connection with ECR, and close the DemoVB window.

## INPUT FILE

To get data into Ecr, it is possible to send some file with informations about plu/clients/offers.

### RECORD PLU:

Every record of file has to be structured in this way:

IM,EAN(12),Description,Condition,Offer,Department,Price1,Price2,Price3

where:

<b>IM</b>	tag which identifies an insert or a modify																
<b>EAN(12)</b>	plu code, composed by 12 digits																
<b>Description</b>	plu code description																
<b>Condition</b>	<p>Identifies the conditions to apply to item. For each condition, there is a value, as indicated in the table below:</p> <table border="1"> <tr> <td>4</td> <td><b>Enable change price:</b> enable the change price by the key [PRICE]</td> </tr> <tr> <td>8</td> <td><b>Exclusion stickers:</b> the item doesn't make stickers and it is excluded by fidelity</td> </tr> <tr> <td>16</td> <td><b>Prize Item:</b> indicates which the item is a "PRIZE ITEM"</td> </tr> <tr> <td>256</td> <td><b>Obligation item price:</b> Ecr ask to operator to insert the unit price</td> </tr> <tr> <td>512</td> <td><b>Scale Code:</b> indicates a item as a "code-price" or "code-weight"</td> </tr> <tr> <td>1024</td> <td><b>Weight/Price Scales code:</b> indicates a "code-weight" code</td> </tr> <tr> <td>2048</td> <td><b>Scales code 6 digits:</b> Value with 5/6 digits</td> </tr> <tr> <td>4096</td> <td><b>Client Record:</b> indentifies the record as a client *</td> </tr> </table> <p>It's possible to use conditions together, by summing the values. <b>Example: Condition = 528</b> → weight prize item (16+512)</p> <p>* : you can't sum other values</p>	4	<b>Enable change price:</b> enable the change price by the key [PRICE]	8	<b>Exclusion stickers:</b> the item doesn't make stickers and it is excluded by fidelity	16	<b>Prize Item:</b> indicates which the item is a "PRIZE ITEM"	256	<b>Obligation item price:</b> Ecr ask to operator to insert the unit price	512	<b>Scale Code:</b> indicates a item as a "code-price" or "code-weight"	1024	<b>Weight/Price Scales code:</b> indicates a "code-weight" code	2048	<b>Scales code 6 digits:</b> Value with 5/6 digits	4096	<b>Client Record:</b> indentifies the record as a client *
4	<b>Enable change price:</b> enable the change price by the key [PRICE]																
8	<b>Exclusion stickers:</b> the item doesn't make stickers and it is excluded by fidelity																
16	<b>Prize Item:</b> indicates which the item is a "PRIZE ITEM"																
256	<b>Obligation item price:</b> Ecr ask to operator to insert the unit price																
512	<b>Scale Code:</b> indicates a item as a "code-price" or "code-weight"																
1024	<b>Weight/Price Scales code:</b> indicates a "code-weight" code																
2048	<b>Scales code 6 digits:</b> Value with 5/6 digits																
4096	<b>Client Record:</b> indentifies the record as a client *																
<b>Offers</b>	Offer Identifier (the offers can be set only by DemoVB)																
<b>Department</b>	indicates the item department																
<b>Price1</b>	indicates the price for price list 1																



<b>Price2</b>	indicates the price for price list 2
<b>Price3</b>	indicates the price for price list 3

**Example item record:**

IM,000000000007,'CIOCCOLATE',0,0,1,1000,0,0

**DemoVB command for sending items file:**

**EM\_LINK CMD='UA', FILE='filename'**

where:

- **CMD='UA'** : Upload items command
- **FILE='filename'** : identifies output file

(Ex: **EM\_LINK CMD='UA', FILE='C:\Items.txt'**)

## RECORD CLIENT:

IM,EAN(12),Description,Condition,Offers,Price list,Perc. discount on subtotal,Seq stickers,amount stickers

where:

<b>IM</b>	tag which identifies the insert or modify
<b>EAN(12)</b>	client code/card client, composed by 12 digits
<b>Description</b>	client description
<b>Condition</b>	4096 (Fix: identifies a client)
<b>Offers</b>	0 (Fix)
<b>Price list</b>	Price list to apply to client: 0 = current price list 1 = use price list 1 2 = use price list 2 3 = use price list 3
<b>Discount percent on subtotal</b>	discount percent on subtotal, using the last 4 digits of price with two decimal digits. <b>Example: 00001525 = 15,25%</b>
<b>Sequence number stickers</b>	sequence number of stickers assigned, using 8 price digits
<b>Amount stickers</b>	amount stickers assigned

### Example client record:

IM,123400000007,'DAVID BROWN',4096,0,1,00001525,0,0

To log in a client, you need set a prefix client, which distinguishes a plu code from code card client.

For any further informations, follow the document **YP\_Clients\_Manage**.

### DemoVB Command for sending clients file:

**EM\_LINK CMD='UA', FILE='filename'**

where:

- **CMD='UA'** : Upload items command

- **FILE='filename'** : specifies file input

(Es: **EM\_LINK CMD='UA', FILE='C:\Items.txt'**)