



WARNINGS



The WIFI hardware update of DITRON cash register must be carried out only by specialized personnel with good training or experience in the device and equipped with adequate knowledge of the system.



The manufacturer cannot be held liable under any circumstances for any damage or losses resulting from not proper use of components.
Incorrect installation of this product, unlike what is specified in this instructions, it can cause malfunctions.



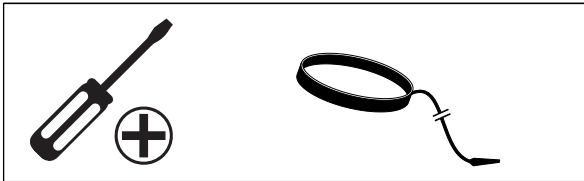
Before carrying out the WIFI module installation, make sure that the cash register power cord is disconnected.
Wear antistatic bracelet during the operation.

CASH REGISTERS

Ditron i-Deal
Sarema X1
Sweda Store
Distribution Systems Ds380
Suprema Sigma
Ditronnetwork IT-K

PRINTER MODELS

Ditronnetwork iT
Ditronnetwork iT-1



CONTENTS OF THE KIT

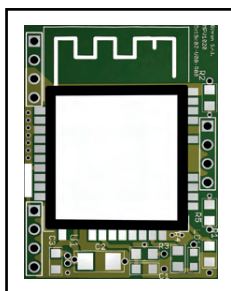
- WI-FI module Code: MPZ1020
- instructions for the WIFI module installation are available at www.ditron.eu

INSTALLATION AT I-DEAL / X1 / STORE / DS380 / SIGMA MODELS

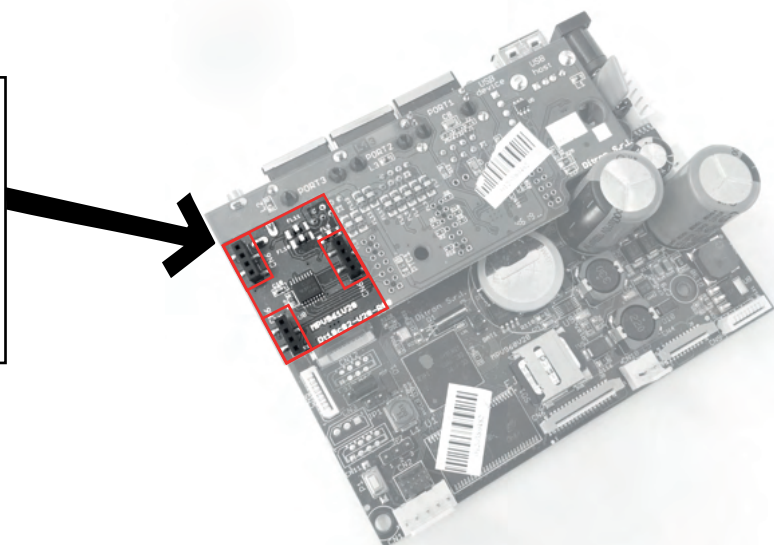
Upgrade of MPZ960 board

- Make sure the power cord is unplugged.
- Wear an antistatic bracelet.
- Gently insert the WIFI module into the three connectors, shown in fig. (1) (2) (3).
- Close the machine and check all connections.
- Re-test the machine and configure it

1

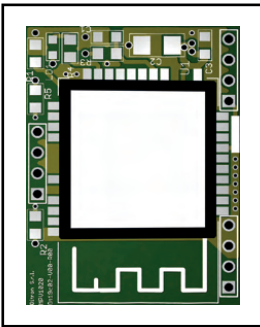


Wifi module
(direction of insertion)

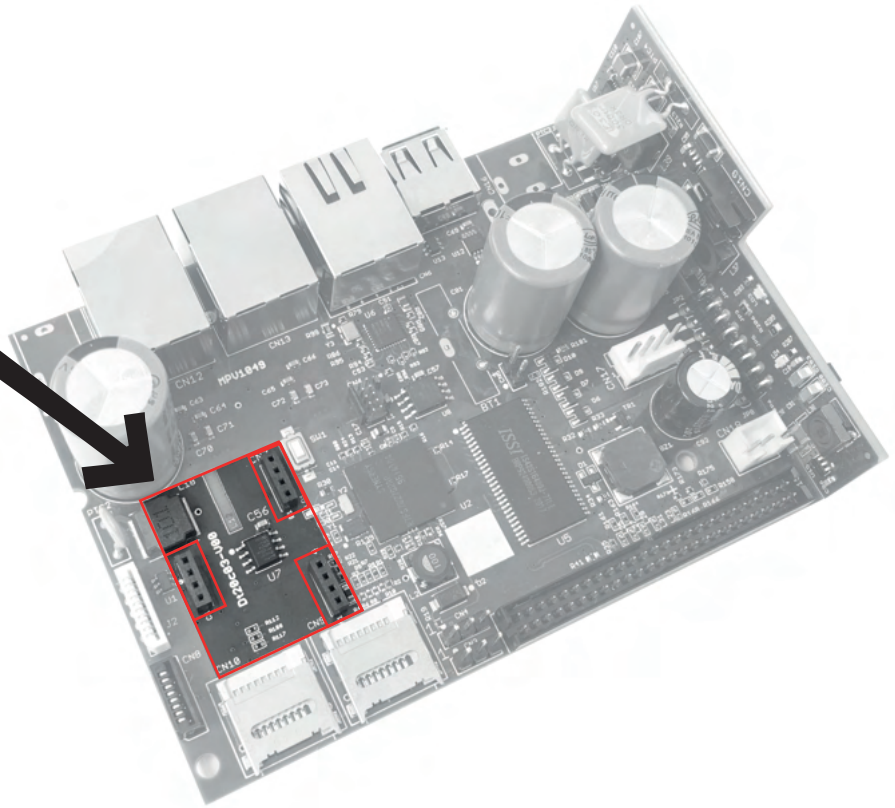


INSTALLATION AT i-TK MOBILE model Upgrade of MPZ1049 board

2

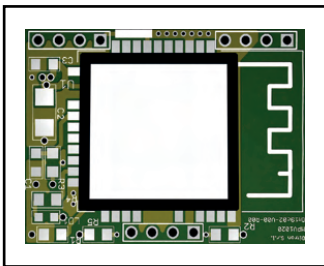


Wifi module
(direction of insertion)

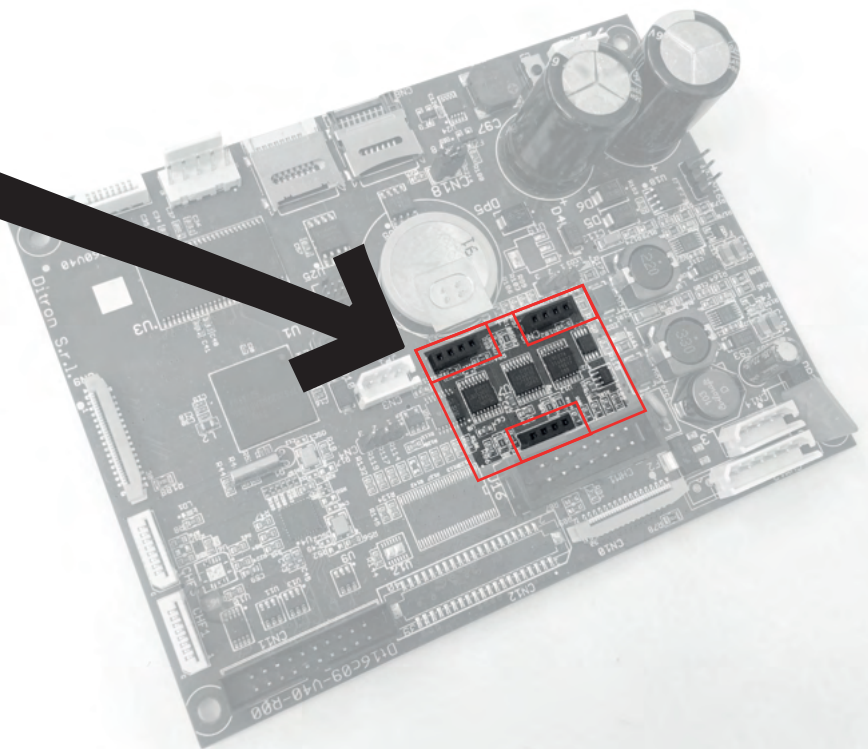


INSTALLATION AT i-T and i-TONE models Upgrade of MPZ860 board

3



Wifi module
(direction of insertion)





Wi-Fi CONNECTION can be configured in the "LAN Port" menu (10 SELECT, in P KEY).
The new options available are below described:

INTERFACE TYPE

It is possible to change the type of interface using the "SELECT" key (the default value is 'Ethernet').

SSID

It is a Text field, identifying the Wi-Fi network to which you want to connect the cash register. It is shown only if you choose "WI-FI" in the "INTERFACE TYPE" menu. At the menu entry the previously set value is displayed, it is possible to scroll through the networks identified by the Wi-Fi module by pressing the "SELECT" key. You can also enter the network name manually, or by scanning a QR code (hereinafter the indications).

PASSWORD

It is a Text field, password of the network to which you want to connect the cash register. It is shown only if you choose "WI-FI" in the "INTERFACE TYPE" menu. At the menu entry the previously set value is displayed. You can also enter the password by scanning a QR code (hereinafter the indications).

When the "password" menu is confirmed, an attempt will be made to connect to access point, using the "SSID" and "PASSWORD" set.

You can enter the "SSID" and "PASSWORD" fields by connecting a 2D scanner and scanning the QR codes, typically generated by smartphones, relating to the Wi-Fi Hotspot settings.

These codes can also be generated online, for example on the website: <https://qrcode.tec-it.com/it/Wifi>. The format of the string encoded by the QR code is as follows:

WIFI: T: WPA; S: networkname; P: password;;

- Scanning is only possible if you are in the "SSID" and "PASSWORD" menus.
- Scanning sets always both items.

Notes:

The Wi-Fi settings are not lost when reset by the authorized person, just as it already happens for the other network settings (DHCP, IP address, etc.).

Be sure to enable the WI-FI at "INTERFACE TYPE" option of "LAN PORT " menu only if the Wi-Fi module has been installed. If the "INTERFACE TYPE" option is not available it means that the firmware version is not updated.

If the Wi-Fi option is active, in case of no Wi-Fi network the cash register does not switch to Ethernet automatically .

NB:

Wi-Fi activation engages serial port 2, therefore, this cannot be used for other purposes if Wi-Fi is active. Similarly, if the serial port 2 is used, for example by the protocol, the Wi-Fi cannot be activated. This limitation does not apply to the mobile model.